



**INUNDATOR**



# Ferrara Industrial Apparatus



Our Inundator Series of industrial apparatus stands ready to meet the flow rates, hose load, foam / water tank capacities, and overall operational requirements of the fire ground challenges faced daily by Industrial Fire and Emergency Response Departments.



Ferrara's complete line of industrial aerials, foam tenders, pumpers, pumper-tankers, quick attack units, and Rescue / Hazmat units are designed from the ground up to meet and exceed your needs in a new apparatus.

The truck on the left is an HD-100 rear mount platform with 3000 GPM Hale 8FG pump. The platform is equipped with two electric monitors. Both are rated at 1000 GPM.

Rear discharges are available with integral check valves to allow supply of these 2000 GPM electric remote monitors from either the on-board 8FG pump or a remote source.

Check out the extra low hose bed, designed for firefighter safety. Our L-shaped tank still carries 1000 gallons of concentrate.

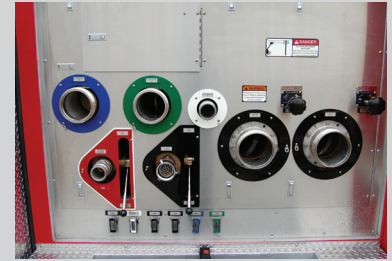
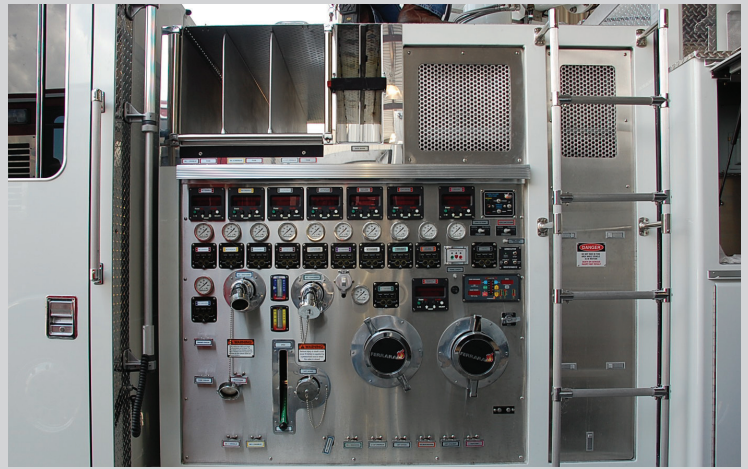




# Pump Controls

Traditional side mount pump operator's control panel, top mount pump operator's control panel and rear mount pump operator's control panels are available.

Ferrara also includes in our product line a rear mount pump location with top mount operator's panel, and for those wishing to keep the operator isolated from the environment: an in-cab pump operator's control panel.



# High Flow Monitors



Rear mounted monitors can achieve 2000 GPM flows. Put one on each rear body corner with either a TFT Monsoon or Akron StreamMaster.



Twin Elkhart Vulcan monitors, each rated at 1000 GPM. Both are electric operated and have available radio remote control functions.

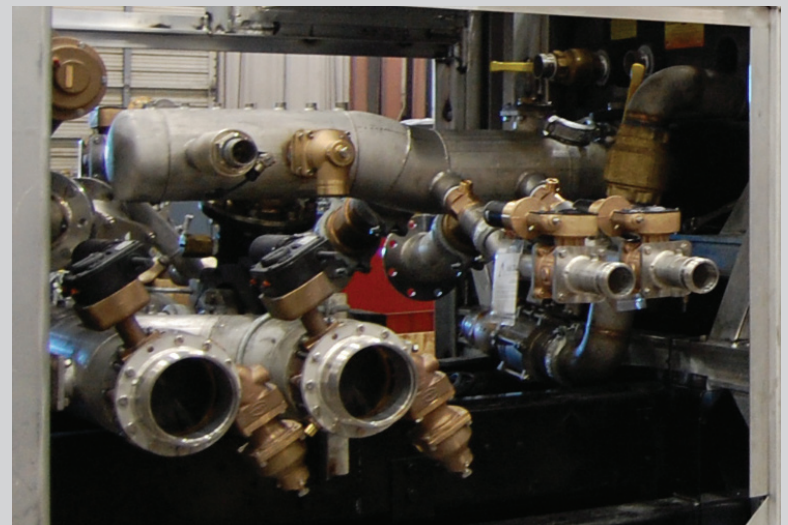


Williams Fire & Hazard Ranger 3 Plus with flows up to 4000 GPM or the Williams Ambassador 1x4 with flows up to 6000 GPM. Both are available with radio remote controls, as well as a Hydro-Chem nozzle for 3 dimensional fires.

# Plumbing

Our schedule 10 stainless steel plumbing is designed for maximum flow and corrosion resistance. The plumbing for each truck is custom engineered and fabricated. This gives you the utmost flexibility in designing your new industrial truck.

Available foam systems include Williams Fire & Hazard's Advent and Hot Shot II 60, 150, 250 and 300 balanced pressure; the FoamPro Accumax multi-point injection; or a National Servo Command system.





# Industrial Pumpers



The Ferrara Inundator foam pumper is available in many different designs, each suited to the extreme hazards associated with industrial firefighting. Whether you just need a small hand line or the 6000 GPM flow of the Williams Ambassador monitor, we've got you covered.



# Industrial Rescues



Industrial rescue vehicles by their nature are very different. You have specialized equipment to carry, along with high tech items such as weather stations, computers and smart screens. Let our rescue specialists assist you in designing the truck that will be right for you.



# Industrial Aerials



Ferrara has a complete lineup of industrial aerial apparatus. We offer the SHD-100, a super heavy duty, 3-section aerial ladder with a 100' vertical reach. The aerial can flow up to 2000 GPM.



# Industrial Foam Tenders



Inundator industrial foam tanker apparatus from Ferrara are heavy duty trucks designed to be used as a pumper or as a foam supply unit, with tank size available from 1500 to 3000 gallons.



27855 James Chapel Rd  
PO Box 249  
Holden, LA 70744

**FERRARA**  
FERRARA FIRE APPARATUS, INC.

[www.ferrarafire.com](http://www.ferrarafire.com)  
[info@ferrarafire.com](mailto:info@ferrarafire.com)  
800-443-9006