



**MVP**  
MULTI VOCATIONAL PUMPER



# MVP

The MVP is available on all Ferrara custom chassis, with water tanks up to 1000 gallons. Ask Ferrara's engineers to design your MVP with a cab and body that will meet your needs and easily carry all the equipment you need! The MVP has an extruded aluminum body and the heavy duty construction you expect from Ferrara.



Designed with firefighter safety in mind, the MVP features low step heights, frame rail height crosslays, low hose bed and lowered body height to make it easier to retrieve equipment.

Since the most important part of any pumper is the pump, the MVP flows up to 2250 GPM. With available 500 GPM pump and roll, the MVP allows you to attack the fire anywhere.

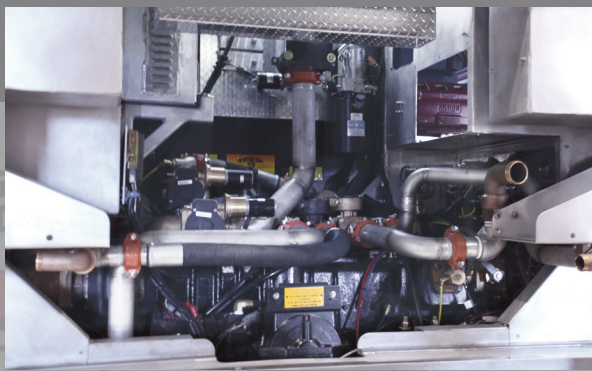


Because the MVP uses a traditional shaft-driven midship pump, intakes and discharges are where you want them; easy to access and at the proper height. The conventional yet compact pump panels provide everything you'd expect in a pumper: jump lines, triple crosslays, deck gun, rear body, hose bed and LDH discharges.

The MVP has available pump and roll with a transmission PTO driven pump. Feeding back into the midship pump discharges, you can flow 330 GPM through two 1 $\frac{3}{4}$ " handlines at 80 psi, while driving an easy 2 $\frac{1}{2}$  miles per hour.







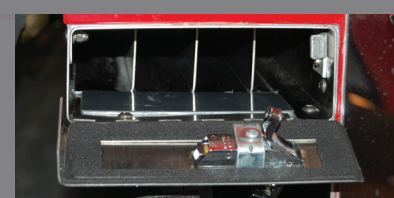
Pump maintenance is a snap. With the crosslay trays removed the pump is open for routine service. If your mechanics require additional access, the backboard sleeve is removed in less than 5 minutes. To set your mechanics at ease, the MVP uses a traditional midship, shaft-driven pump that has been in the fire service for years.

One look at all the MVP carries and you will ask yourself, "How many trucks do we use to carry all of this equipment?"



Get Your MVP Equipped and Ready for Service. Just look at how much equipment the compact 183" wheelbase MVP will carry:

- Stokes
- 3 backboards
- Fire extinguishers
- Forcible entry tools
- Pump operator's tools and fittings
- Water cooler
- Wheel chocks
- Air bags
- Cribbing
- Extrication tools with truck-mounted and portable power Unit
- PPV fan
- Chain saw
- Cut off saw
- Cordless hammer drill
- Generator with quartz light
- Rescue strut kit
- Haz-mat kit and 60 gallon drum
- Advanced life support equipment
- O2 bottles
- AED
- Trauma bags
- Medical supplies
- Swiftwater rescue
- Rope kits
- RIT team pack
- High angle rescue
- SKED
- Rescue tripod
- Decontamination shower
- Foam
- Long handled tools
- Ladders
- Pike poles







MVP HD-77 Aerial Ladder




MVP Heavy Rescue



MVP Rescue Pumper

## Design Your MVP

|                        |  |
|------------------------|--|
| Ferrara Custom Chassis | Inferno, Igniter, Ember, Intruder 2<br>All feature 3/16" thick marine grade aluminum cab construction  |
| Wheelbase              | 183" on a 500 gallon pumper<br>224" on an HD-77 aerial quint<br>189" on a heavy rescue   |
| Pump                   |  QMAX, ratable up to 2250 GPM<br>Optional AP50 500 GPM PTO pump   |
| Foam                   | MVP available with CAFS, Class A injection, ATP or Eductor, fed via integral foam cell   |
| Water Tank             | Pumper: 500 to 1000 gallons<br>Heavy Rescue: 300 to 500 gallons<br>Aerial: 300 to 500 gallons  |
| Body                   | Heavy duty extruded aluminum with 3/16" thick 5052-H32 marine grade compartments<br>Up to 460 cubic feet of storage on a 500 gallon pumper<br>Over 500 cubic feet available on a 500 gallon heavy rescue |

27855 James Chapel Rd  
PO Box 249  
Holden, LA 70744

**FERRARA**   
FERRARA FIRE APPARATUS, INC.

www.ferrarafire.com  
info@ferrarafire.com  
800-443-9006