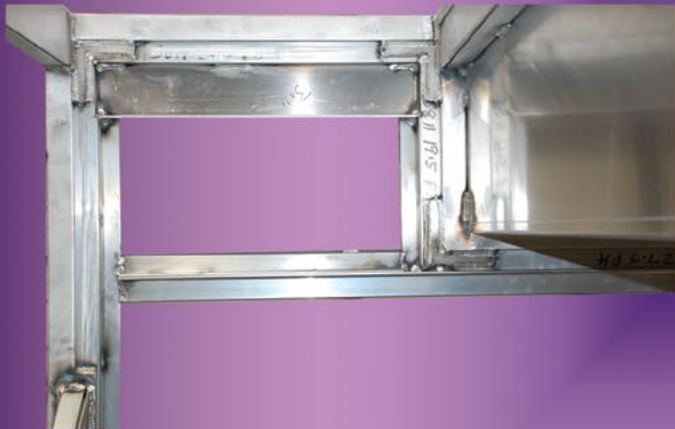




Black anodized aluminum pump panels are non glare and easy for the pump operator to use.



Ferrara's pump compartment is built to take the twists and turns from the road. Loaded with gussets and reinforcing plates at each corner, just count the welds and get an idea of the strength of our extruded fire body!



Top mount panels have a full width, hinged gauge panel. Control handle openings are finished with highly polished trim plates.



Improve service access with our optional hinged pump panel. Simply remove caps and elbows to open the entire panel.



Side panel trucks have a large, right side pump access panel. Top mounts have this on left and right sides.



All side panel trucks also have a hinged gauge panel



Our budget and service friendly rear mount pump installation allows you to use manual valve actuators in an easy to read panel.



Our 3/16" thick aluminum compartments are built to carry all the equipment you need. They are standard with a 25" deep lower area and 12" deep high sides.



Wheel wells come standard with bright aluminum diamond plate trim, bolt in wheel well liners and polished stainless steel fenderettes.



We build crosslays with the attention to detail you expect from Ferrara. Adjustable dividers, full width ribbed flooring, stainless steel trim plates and 3-way rollers are all standard equipment.



The hose bed is made from 3" x 3.5" and 2" x 4" tubular extrusions, slotted to receive 3/16" thick 5052 H-32 marine grade aluminum plate.



Optionally, you can get pumper compartments in a full height/full depth configuration. Standard depth is 25", with available 28" depth!



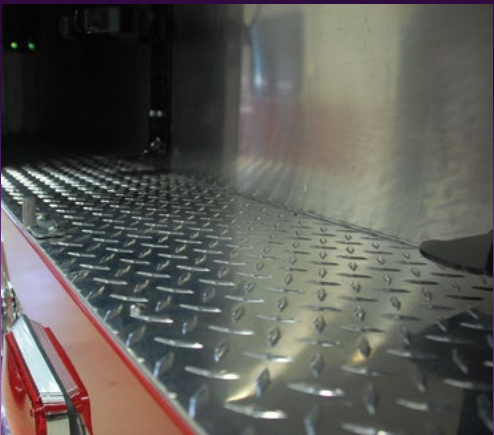
Stop storing fire extinguisher on the truck exterior. Protect those and other valuable equipment with enclosed storage.



Speedlays have the same features as our crosslays and are available with top, side or rear mount pump panels.



If hose bed height is a concern, use our optional low hose bed configuration with a 500, 750 or 1000 gallon tank.



Compartment floors are sweep out design, easy to maintain and clean.



Looking to maximize compartment space? Ferrara's craftsmen will custom build a compartment for things like this cutting torch.



Cast, non slip steps with integral lights are standard, along with raised surface handrails



Do you have a special requirement or a unique design need? Let Ferrara's engineers custom build your extruded fire body.



All Bodies Are Not Created Equal

FERRARA
FERRARA FIRE APPARATUS, INC.

27855 James Chapel Road • PO Box 249 • Holden • LA 70744
Toll Free 800.443.9006 • Fax 225.567.5260
www.ferrarafire.com • info@ferrarafire.com



Carrying a heavy load? We can wrap the compartment with welded 2" x 4" tubular extrusion for additional strength.

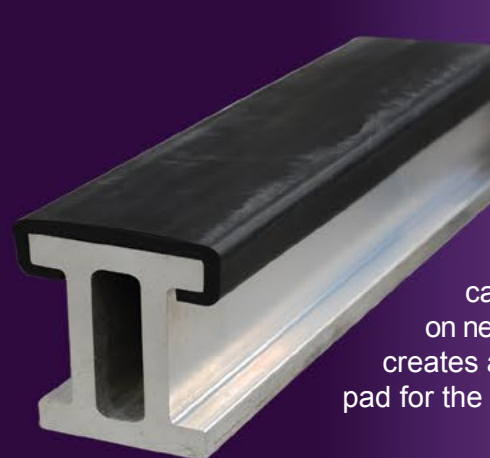
Underbody wiring is supported by welded aluminum extruded flat bar.



Ferrara beavertails are constructed from all welded aluminum tubular extrusions. This is a structural assembly unto itself, built to support the weight that is constantly placed on the tailboard.



Each corner compartment has removable service panels to access wiring harnesses.



7/16" thick, 3" x 4" double I-beam cross member supports the heavy loads you need to carry. The snap on neoprene extrusion creates a fastener free pad for the booster tank.



Start with a strong foundation! Ferrara's extruded aluminum sub frame not only provides the body's strength, it also creates a mounting cradle for the booster tank.



Hose bed side walls, body headboard and rear body all are made up of aluminum extrusions, slotted to receive 3/16" thick marine grade aluminum plate.



Extrusions with perpendicular weld joints are 45-degree beveled for superior weld penetration and strength.

FERRARA THE Heavy Duty Extruded Aluminum Fire Body!

Built to last a lifetime. Our extruded aluminum fire body is the strongest and most durable in the industry. Built from 6061-T6 and 6063-T6 aluminum alloys, each of our certified extrusions are custom designed for a specific use in the apparatus body. Our sub-frame, compartment framework, hose bed, wheel wells, beavertails, pump compartment and running board/tailboard assemblies all rely upon heavy duty extruded aluminum shapes that have a particular design function.

Throughout the years, we have redefined the way custom fire bodies and, in particular, extruded aluminum fire bodies are designed and built. Our experienced team of engineers and craftsmen give you virtually unlimited flexibility when it comes to creating the body that will meet the needs of your fire department. We can help you make optimal use of available storage space so you can respond to emergencies with the equipment you need.

Ferrara's extruded aluminum fire body works equally well in a pumper, tanker, rescue, aerial, haz-mat, incident command or specialty vehicle configuration. Let us design yours today!

Leading The Way!



Guard your investment! The booster tank is protected from road debris with a formed aluminum deflection shield.



Body electrical panels are recess mounted with an easily removable cover. The cover also has a pre-printed electrical diagram on the inside.



Still the only extruded aluminum body with nut and bolt attached hinged compartment doors. Easy service, easy adjustment and, with our rotary D-paddle latch, easy to open and close.



The double I-beams are reinforced with massive 2" x 4" extruded gussets. Why settle for less?



The sub frame is welded to our 3/4" thick, solid aluminum extruded frame rail extrusion, which is isolated from the chassis frame with a 1/2" thick neoprene rubber extruded C-channel.



Sturdy 5/8" diameter U-bolts are used to secure the body to the frame. Forward U-bolts are spring loaded to withstand the movement of the chassis frame.



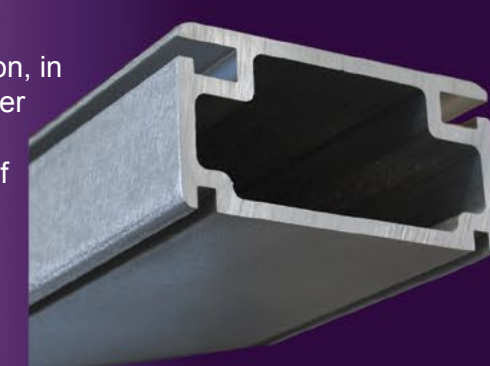
At each corner, our 3.5" x 9.75" vertical extrusion, with a wall thickness of nearly 1/4", gives your body the strength you need for years of service.



We attach the corner extrusions with a series of plug welds for superior weld coverage and penetration.



This 2" x 4" extrusion, in addition to the corner extrusion, makes up the framework of each compartment.



The running boards and tailboard are constructed from anodized aluminum extrusions with a raised non-slip surface for sure footing



Body compartments are all 5052 H-32 3/16" thick aluminum alloy plate. Each compartment is continuously welded for added strength. The weld is external, so the compartment interior has a great finished look.